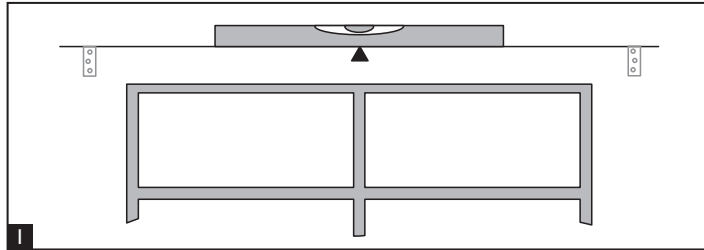


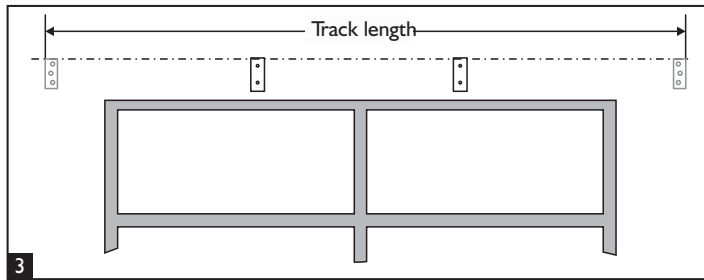
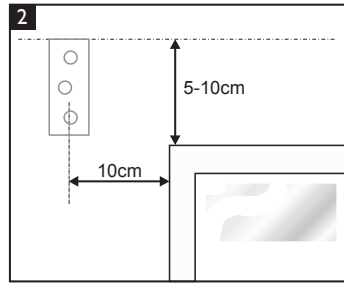
1. Preparing the window



Use a spirit level to mark the top line of the brackets, Fig. 1.

Position track up to the window and centralise over width to determine correct length, Fig. 2. Remember to allow sufficient length either side to accommodate the curtains when opened and stacked back.

For long track lengths you must fit intermediate support brackets at equal intervals along the track length shown in Fig. 3.

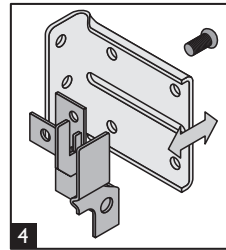


The track is adjusted in length by sliding the inner track into or out of the outer track.

Ceiling Fixing go to Section 5

2

2. Fixing wall brackets



1. It is easier to mount the bracket by removing the mounting clip as shown in Fig. 4.

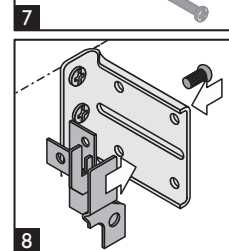
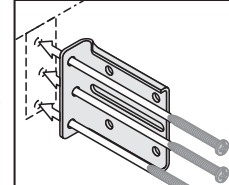
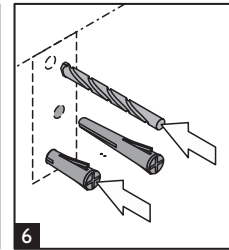
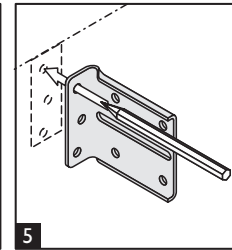
2. Position the brackets on the wall and mark the holes on the wall, Fig. 5.

3. Drill 2mm ϕ pilot hole if mounting on to a wooden batten. If mounting directly on to a masonry or studded wall, Fig. 6, use the appropriate drill size for the wall plug (seek guidance from local builder's store if unsure).

Please ensure the correct wall plugs are used to suit your wall type.

4. Using the correct screws fix the brackets securely, Fig. 7. Alternative wall fixings should be used where necessary.

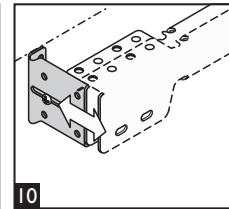
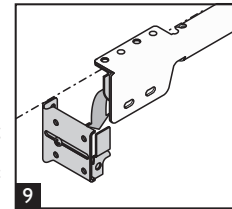
5. Reassemble the bracket mounting clips as shown in Fig. 8.



3. Fitting the track

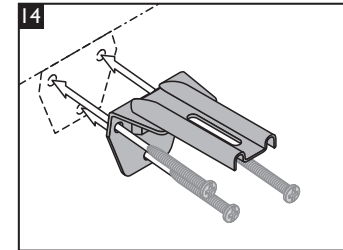
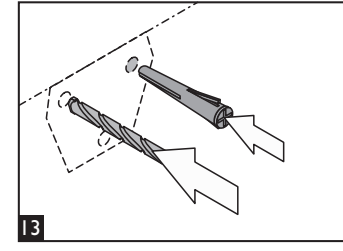
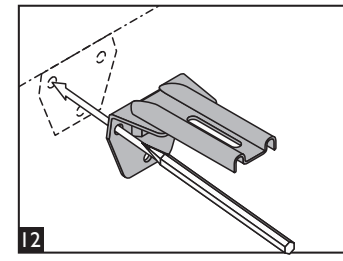
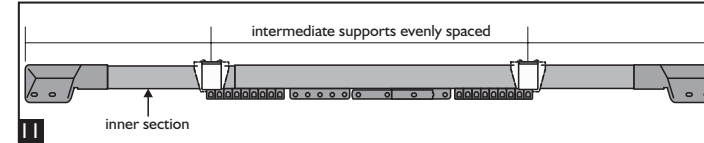
1. Extend rail to the approximate required length and slot into the end brackets (Fig. 9).

2. You can adjust the position of the track relative to the wall by loosening the small locking screws in the end brackets and then pulling the track out to suit (Fig. 10).



3

4. Fixing intermediate wall brackets



1. With the track in the outer brackets space the intermediate brackets and mark their position, Fig. 11.

2. Remove the whole track from the end brackets. Hold the brackets up to the fixing line, mark off the holes for the screws with a pencil, Fig. 12.

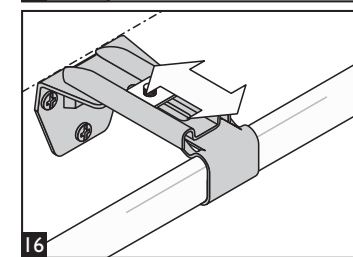
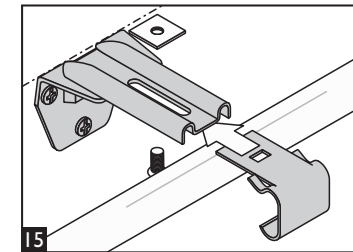
3. Drill 2mm ϕ pilot hole if mounting on to a wooden batten. If mounting directly on to a masonry or studded wall, Fig. 13, use the appropriate drill size (seek guidance from local builder's store if unsure).

Please ensure the correct wall plugs are used to suit your wall type.

4. If mounting directly onto a masonry or studded wall insert suitable wall plugs, Fig. 13.

5. Fix the brackets securely, Fig. 14.

4



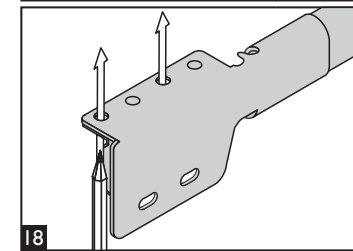
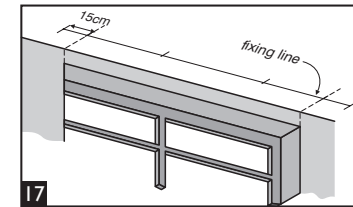
6. Re-fit the track onto the rail end brackets. Fit the intermediate support brackets clips on to the track Fig. 15.

Use the appropriate clip for the inner and outer rails (the inner rail is smaller).

7. If you need to adjust the support brackets, loosen the fastening screws and pull the bracket clip backwards or forwards, Fig. 16.

Go to Section 6

5. Ceiling Fixing

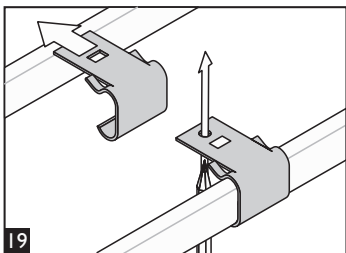


The track can also be mounted directly to the ceiling or a batten on the ceiling. This section describes how fix track to the ceiling.

1. To mount the track directly to the ceiling, position track up to the window and centralise over width to determine correct length, Fig. 17. Remember to allow sufficient length either side to accommodate the curtains when opened and stacked back.

2. Position the brackets on the ceiling and mark the holes on the ceiling, Fig. 18.

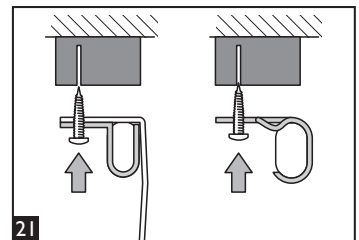
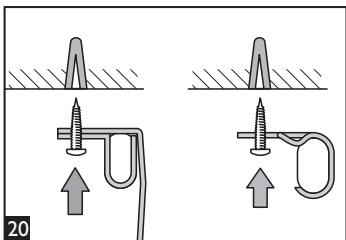
5



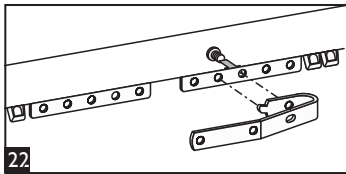
4. Fit the intermediate support clips onto the track in the fixing position and mark the holes on the ceiling, Fig. 19.

5. Once you have marked the position of the brackets, drill holes and using the appropriate plugs fix the brackets. If you are fitting directly to plaster board ceilings, use the appropriate plaster board fixings, Fig. 20 (not included).

6. You may want to fix a baton to the ceiling or window recess to facilitate the mounting of the rail as shown in Fig. 21. This is the preferred method if you are hanging heavyweight curtains.

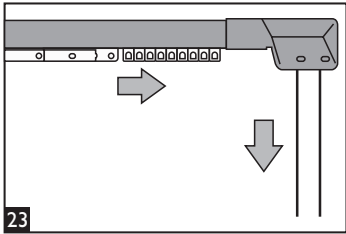


6. Fitting overlap and underlap arms

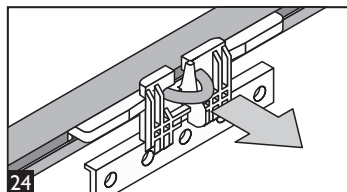


The slide arms have four position options and you can choose which side to have the curtain overlap. Remove the small locking screw from the overlap arm and reposition the arm as required, Fig. 22.

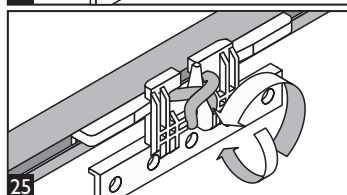
7. Centring the Master Slides



1. Ensure that both slides are in the fully open position.
2. Pull the outer draw cord to move the overlap slide to its end of the track (Fig. 23).
3. Hold both cords taut and move the underlap slide by hand to its end of the track.



4. Lift up the cord off the top peg behind the left hand side or underlap slide, Fig. 24.



5. Twist it once and place the loop created under the lower peg as shown in Fig. 25.
6. Pull the outside cord to tighten the loop. Check to ensure the slides are still centred and adjust again if necessary.

8. Finalising Cord Length and Cord weights

For the following pole lengths, 1.0 - 1.75m, 1.75 - 3.0m and 2.5 - 4.0m you are provided with cord weights. You must finalise the cord length before fitting the cord weights.

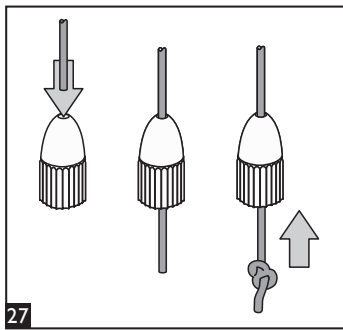
for 3.0 - 5.5m pole goto Section 9



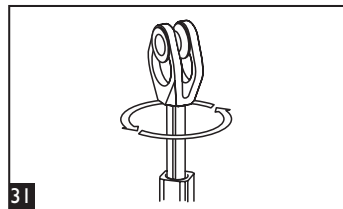
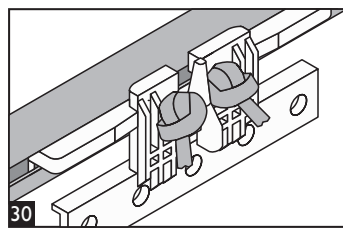
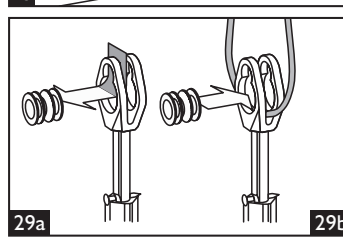
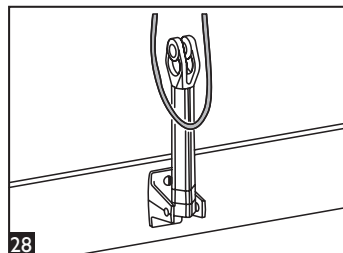
1. Pull the inner cord until the slides are positioned mid way from the centre point to the ends. Cut the cord in half to make two equal lengths.

2. Slide a cord weight onto each length. Tie a single knot lightly beneath each one (Fig. 27).

3. Open and close the Master slides until you are happy with the eventual positioning of both pull cord weights. Cut any excess cord, tie a strong final knot in both cords and slide the cord weights down.



9. Fitting a Tension Pulley (for 3mm - 5.5mm only)



1. Using the two screws supplied, fix the tension pulley to the floor, skirting board or window sill, directly in line with the pull cord as shown (Fig. 28).

2. Extend the neck of the pulley and secure in higher position using a pin or small nail. Remove the central barrel of the pulley by pulling it down and then out (Fig. 29a). Place the cord inside the pulley and replace the barrel ensuring it clicks into place (Fig. 29b).

3. Take up the slack of the cord and tie a knot behind the masterslide arm. Remove the pin or nail from the pulley, the cord will now be fully tensioned. If there is insufficient tension in the cord, reduce the cord length by adjusting the knot behind the masterslide arm (Fig. 30).

4. If the cord becomes twisted, simply rotate the head of the pulley to untwist it (Fig. 31). The track is now ready to accept curtains.

Safety

- Only use a step ladder or stable chair to reach fixing height.
- Do not over reach. Always move the stepladder or chair, so that you are in a safe working position.
- Do not hold or lean on the track to support your weight.
- Use two people for the installation of longer tracks.
- Take care when using power tools, use of a Residual Current Device (RCD) is recommended.
- Always wear eye protection when drilling.
- Beware of hidden pipe runs and cables.

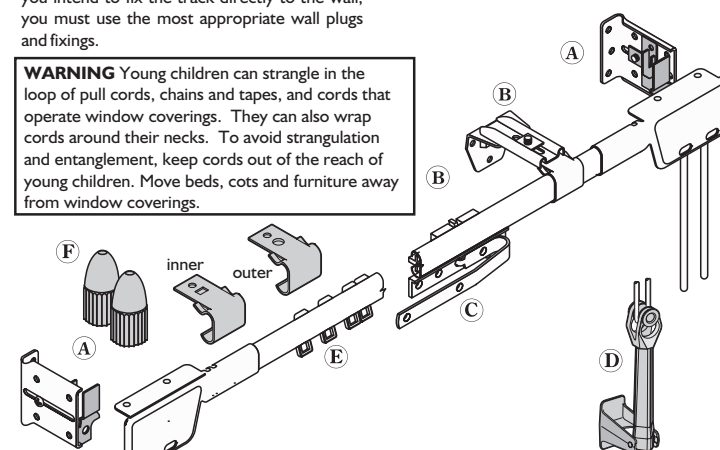
integra Swanglide

Fitting Instructions

Please read these instructions carefully and check the contents of the pack against the table, before attempting to assemble and fix this product. The fixing screws supplied are for use where a wooden batten is fixed to the wall, you must use the most appropriate wall plugs and fixings.

Tools Required: Spirit level, Tape measure, Flat bladed screwdriver, Crosshead (Philips) screwdriver, 2mm drill bit (pilot hole for wood screws), Pencil, Step ladder.

WARNING Young children can strangle in the loop of pull cords, chains and tapes, and cords that operate window coverings. They can also wrap cords around their necks. To avoid strangulation and entanglement, keep cords out of the reach of young children. Move beds, cots and furniture away from window coverings.



Should any component be missing, please call the Customer Care Department on 0800 515493.

Contents ▾	Lengths ▷	Lengths			
		1.0m - 1.75m	1.75m - 3.0m	2.5m - 4.0m	3.0m - 5.5m
A Rail End Bracket		2	2	2	2
B Intermediate Brackets	inner	0	1	1	2
	outer	1	1	2	3
C Overlap arm		2	2	2	2
D Tension Pulley		-	-	-	1
E Gliders		18	30	40	56
F Cord weights		2	2	2	-

L4584/iss2

integra

Integra Products Ltd, High Point, Sandy Hill Business Park, Sandy Way, Amington, Tamworth, Staffordshire B77 4DU
 tel: +44 (0)1543 267100 • fax: +44 (0)1543 267105
 email: cus.care@integra-products.co.uk • web: www.integra-products.co.uk